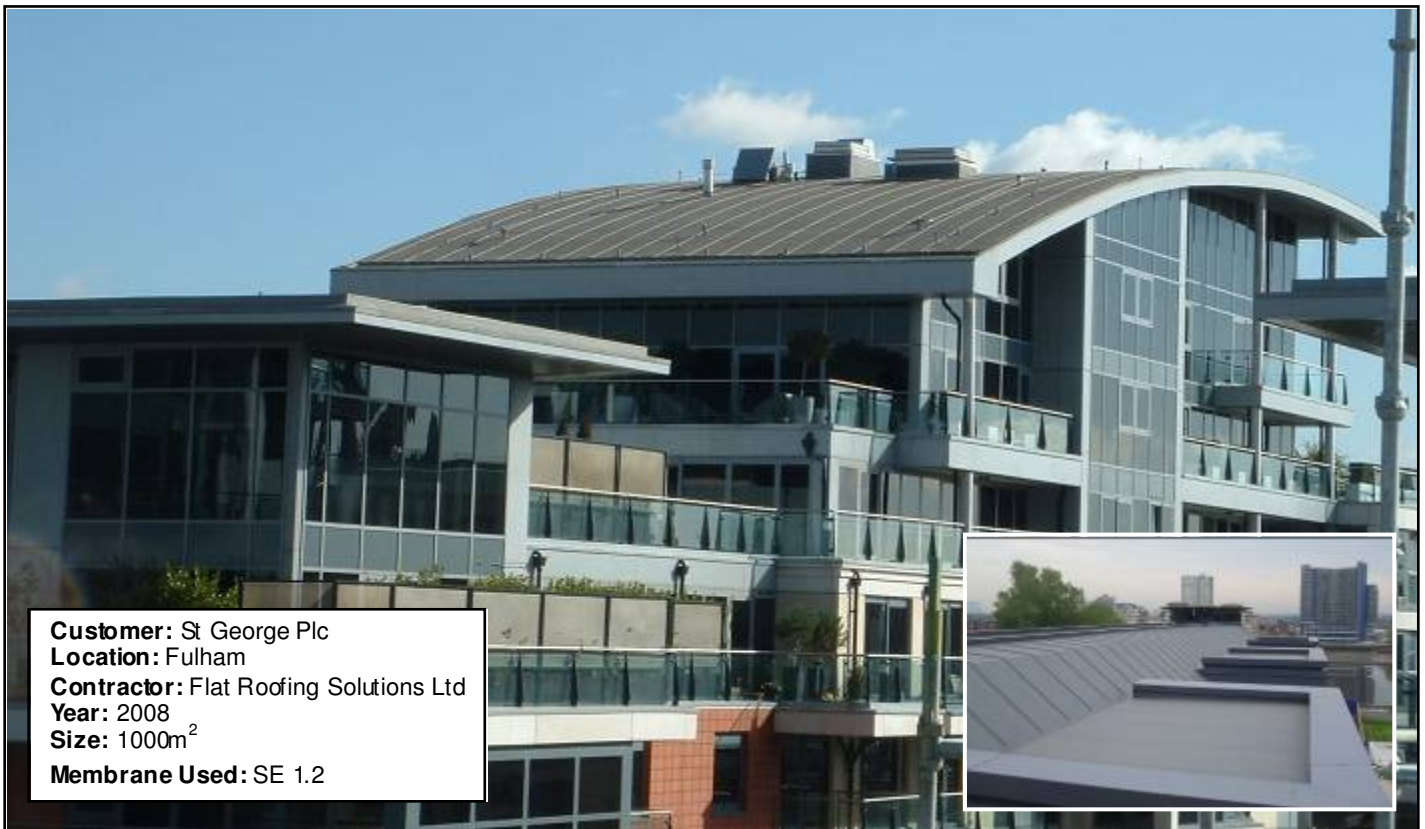


Case Study - Accommodation



Customer: St George Plc
Location: Fulham
Contractor: Flat Roofing Solutions Ltd
Year: 2008
Size: 1000m²
Membrane Used: SE 1.2

Requirement

Imperial Wharf is one of London's premier riverside addresses. The complex boasts not only some of the finest accommodation in Britain but also a number of retail outlets and offices lining the boulevard leading to the river. Award-winning architects Broadway Malyan had a vision to create a vibrant mix of residential and office space, wide boulevards, attractive landscaping and an impressive riverside walk. The roofing material needed to be installed on flat and barrel surfaces and also provide architectural detail to the roof.

The Solution

Protan SE 1.2 was selected as the best material for this project. Its hot air welded properties give it a visually seamless finish complementing the sleek design of the architect. Broadway Malyan also chose to use Protan Omega Profiles across the roof to add another architectural dimension and give the roofs more character. St George Plc, the developers of Imperial Wharf, made a commitment to economic and environmental sustainability which included the specification of their construction materials. Protan membrane has a proven durability in excess of 30 years and is fully recyclable at the end of its working life; making it an excellent product for sustainability and environmental issues.

Warranties

A 15 year warranty is standard on all Protan SE range mechanically fixed systems. This comes with an assurance that all Protan (UK) Ltd products have excellent durability and high performance under extreme weather conditions

Please contact Protan (UK) Ltd for further details.